

# Tower Services

DIALOG Fitzroy Tower Services is a trusted leader in specialist tower painting and maintenance solutions for the Electrical and Communications industry. We deliver end-to-end services across New Zealand and Australia, including transmission tower painting, steel replacements, substation works, and outage management. Backed by over 40 years of blast and coating expertise, we combine technical excellence, ISO-certified quality systems, and innovative practices to ensure the highest standards of safety, durability, and performance.



**DIALOG**  
**Fitzroy**



# Comprehensive Tower Services

## Maintenance and Repairs

- ▶ Bolt torquing, bolt and steel replacement to AS/NZS 3678:2016
- ▶ Installation of new or replacement of Earthplates including electrical resistance testing
- ▶ Installation of new or replacement climbing deterrents and tower signage and other attachments
- ▶ Site Vegetation clearance and removal.
- ▶ Coating preparation methods including mechanical, water blasting, wet abrasive blasting, and air assisted wet abrasive blasting. Equipotential earthing systems for all plant suited to the electrical industry standards.
- ▶ Manual coating application methods, including Brush, roller and mitt suited to various substrate types.
- ▶ Ground matting, containment, sediment run off and spill control suited to project environments. Environmental Management Systems ISO 14001 accredited
- ▶ Supply of network outage equipment for testing, earthing, and insulation covering
- ▶ ISO certified quality management systems for inspection of coating systems, steel replacement. Internal NACE Certified Coating inspectors.

## Project Management

- ▶ Land access landowner liaison and stakeholder database management
- ▶ Site access tracks & soil testing and remediation (if required)
- ▶ Vegetation removal perimeter (if required)
- ▶ Site specific safety and environmental planning
- ▶ Plan and apply for network outages and permits. Transpower permit recipient qualified Supervisors.
- ▶ End to end project management , site supervision, project documentation and administration.
- ▶ All project scheduling and forecasting.





## Fabricated Steelwork and Assemblies

DIALOG Fitzroy steel fabrication workshop and technology provides:

- ▶ Detailed designs and drawing
- ▶ Parts fabrication including steelwork, structure components and accessories.
- ▶ Supply of direct member replacements
- ▶ Quality documentation for quality assurance



## Experienced Competency

- ▶ Over a decade of tower painting expertise
- ▶ Grid Skills Technical Industry Experts and trainer
- ▶ NZQA Assessors
- ▶ NACE
- ▶ IRATA
- ▶ Driving competency offroad 4WD & LUV
- ▶ Gridskills Transmission Line Core Level 1 and Level 2
- ▶ Gridskills Tower Structure Maintainer
- ▶ Structured internal training VOC program
- ▶ Compliance to New Zealand and Australian requirements.

## HSEQ

- ▶ Quality Assurance ISO9001(2015)
- ▶ Health & Safety ISO45001 (2018)
- ▶ Environmental ISO14001 (2015)
- ▶ Frequent internal and external audits undertaken and performance measured;
- ▶ Environmental KPI's include carbon emissions monitoring
- ▶ NACE trained staff for key management roles with inspection knowledge and technical support for coatings & compliance.

# Why Choose DIALOG Fitzroy?

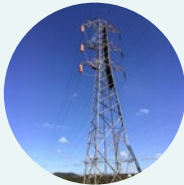
- ▶ Over 12 years as a Transpower-approved contractor and 40+ years of blast and coating experience, delivering reliable solutions for complex tower and substation projects.
- ▶ End-to-end capabilities including tower painting, steel fabrication, Network outage management, corrosion protection, and project planning across New Zealand and Australia.
- ▶ ISO9001, ISO45001, and ISO14001 accredited systems ensure compliance, safety, and environmental responsibility on every project.
- ▶ Highly trained team with NACE, IRATA, and NZQA certifications
- ▶ Long-standing partnerships with major clients such as Transpower, Kordia, Orion Energy, Counties Energy, Powerlink backed by a reputation for performance and ease of doing business.

# Past Projects



## Towers

2 x Recoat 1001m2 with 550m2 spot blast each, primary and secondary preparation and a 3 coat system of a complex and challenging 110KV 12 Cross Arm 4 circuits, special strain towers with double earth wire. Structures location in dense suburb with Traffic management and community engagement requirements.



## Towers

Blast and Paint 4 transmission towers with 6 separatable portions including outages for a total of 852m2 in an exposed heavy industrial environment.



## Substation

Working under outage requirements, surface preparation using a hot 3500psi high pressure water wash, abrasive blasting and mechanical surface preparation of approximately 208m2 for the lightening posts, disconnectors and bus pole legs.



## Communications

Painting of a 53m lead based paint radio mast requiring strict health, environmental and technical (no blasting or water washing) protocols to achieve compliance. Tight operating timelines of 9am – 4:30pm, and strict risk management for electric shock and burn risk along with RF exposure.

Design  
Build  
Maintain



▶ [www.dialogfitzroy.com/contact-us/](http://www.dialogfitzroy.com/contact-us/)

# Contact Us

## Head Office

691 Devon Road Waiwhakaiho  
New Plymouth, Taranaki 4312

## Australia

1284 Lytton Road, Hemmant  
Brisbane, QLD 4174

[tenders@dialogfitzroy.com](mailto:tenders@dialogfitzroy.com)

[dialogfitzroy.com](http://dialogfitzroy.com)

**DIALOG**  
**Fitzroy**